



There are more than **21.3 million** refugees in the world

86% Of the world's refugees are hosted by developing countries

Top host countries include:
1. Turkey (2.8 mil)
2. Pakistan (1.6 mil)
3. Lebanon (1.1 mil)

REFUGEE RESETTLEMENT FACTS

Which of the following statements describes a refugee?

- A. People who cannot return home.
- B. People whose own government cannot or will not protect them.
- C. People who are persecuted for their religious beliefs.
- D. People who flee war or genocide.
- E. People who are brutalized by a military regime.
- F. Fellow Human Beings entitled to basic human rights.
- G. People that have been given refugee status by the United Nations High Commission on Refugees.

RESETTLEMENT TO THE UNITED STATES

The United States has an exceptional history of welcoming refugees and is the top resettlement country in the world. Since 1975, the U.S. government has welcomed **over 3 million refugees** for resettlement from all over the world, and these refugees have built new lives and homes in all 50 states.

UNHCR screens and interviews each resettlement candidate. The United States then conducts its own vetting process and the U.S. alone decides whether to accept a refugee for resettlement. The entire process is conducted abroad, can take up to 2 years, and involves:

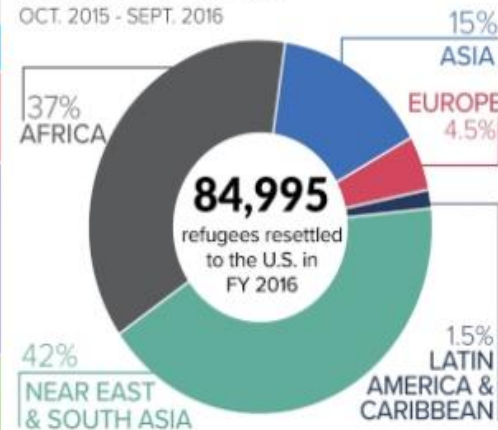
8 U.S. Federal Government Agencies	6 Different security databases	5 Separate background checks	4 Biometric security checks	3 Separate in-person interviews	2 Inter-agency security checks
---	---------------------------------------	-------------------------------------	------------------------------------	--	---------------------------------------

After the U.S. government approves refugees for resettlement, each case is assigned to one of nine NGOs (six of which are faith-based) by the U.S. Department of State. That NGO helps them find work, integrate into their new communities, and adjust to life in the United States.



REGION OF ORIGIN FOR REFUGEES RESETTLED TO THE UNITED STATES IN FISCAL YEAR 2016

OCT. 2015 - SEPT. 2016



TOP STATES FOR RESETTLEMENT IN FISCAL YEAR 2016

- 1 CALIFORNIA
- 2 TEXAS
- 3 MICHIGAN
- 4 WASHINGTON
- 5 NEW YORK
- 6 ARIZONA
- 7 ILLINOIS
- 8 VIRGINIA
- 9 NEBRASKA
- 10 TENNESSEE

U.S. REFUGEE SCREENING PROCESS



WHO IS A REFUGEE?

A refugee is someone who has fled one's home country and cannot return because of a well-founded fear of persecution based on religion, race, nationality, political opinion or membership in a particular social group.

REFUGEE STATUS The UN High Commissioner for Refugees determines if the individual qualifies as a refugee.	1	18 months to 3 years average duration of processing time before a refugee enters the U.S.
REFERRAL TO THE U.S. A refugee is referred to the United States for resettlement by the UN, U.S. Embassy or NGO.	2	
SECURITY CLEARANCE PROCESS A number of security checks are run by law enforcement and intelligence agencies.	3	
IN-PERSON INTERVIEW A U.S. Homeland Security officer conducts a detailed interview face to face with all refugees.	4	
DHS APPROVAL If the U.S. Homeland Security officer finds the individual meets U.S. admissions criteria, the application is conditionally approved for resettlement.	5	
MEDICAL SCREENING The refugee that has been conditionally approved goes through a medical screening.	6	
MATCHING WITH A SPONSOR AGENCY Every refugee is assigned a U.S. partner agency like World Relief that will assist them upon arrival to the U.S.	7	
CULTURAL ORIENTATION Refugees approved for resettlement are offered cultural orientation while waiting for final processing.	8	
2ND SECURITY CLEARANCE PROCESS Prior to departure to the U.S. a second inter-agency security check is conducted to check for any new information.	9	
AIRPORT CHECK Refugees are checked again at airport to ensure the arriving refugee is the same person who was screened and approved for admission.	10	
ADMISSION TO THE UNITED STATES Upon arrival in the United States, refugees are met by a World Relief representative.	11	

Unravelling Myths about Refugees

- 

They can return to their home countries and live without fear. ❌
A person is a refugee if going back to her country means she'll be persecuted based on race, religion, nationality, membership in a particular social group, or political opinion.
<http://www.acf.hhs.gov/programs/orr/resource/who-we-serve-refugees>
- 

They left their countries for better job prospects. ❌
If a person leaves his country for a better job, he doesn't meet the definition of refugee.
- 

They fled due to weather or natural disaster. ❌
Natural disasters often require a humanitarian response (think Hurricane Katrina or the Indonesia Tsunami). Those displaced are not legally refugees and aren't served by US Refugee Resettlement Program.
<http://www.usdoj.gov/eoir/globalissues/briefingpapers/refugees/nextsteps.html>
- 

They are legally admitted to the United States. ✅
Refugees are legally in the United States from the moment they touch down at the airport.
<http://www.state.gov/j/prm/releases/factheets/2015/210135.htm>
- 

They passed background checks. ✅
The UN Refugee Organization (UNHCR) does initial checks and refers people to the US for resettlement. The US Department of State, Department of Homeland Security, and other US Government security agencies complete their own checks. Then US Citizenship and Immigration Services checks all that information.
<http://www.state.gov/j/prm/ra/administration/index.htm>
- 

They are authorized to work. ✅
Yes and they're required to work... Employable refugees (out of school, not otherwise disabled, etc.) who do not accept and keep suitable employment will lose cash assistance which they are eligible to receive for the first 8 months in the US.
<http://bit.do/wfcr-400-75>
- 

They don't have to work. ❌
See above. Resettlement agencies are required to provide job training and assistance in the job search.
- 

They chose to come to the US. ❌
Refugees would prefer to stay in their homes, but they can't. Resettlement is the third choice, after repatriation and local integration into their country of asylum. After it's established that a refugee must be resettled, UNHCR considers a variety of factors to decide to which country to refer the refugee for resettlement. That doesn't mean the referral country has to accept the refugee.
<http://www.unhcr.org/54464ee37.html>
See p353, Section 7.6.1 Determining the country of submission
- 

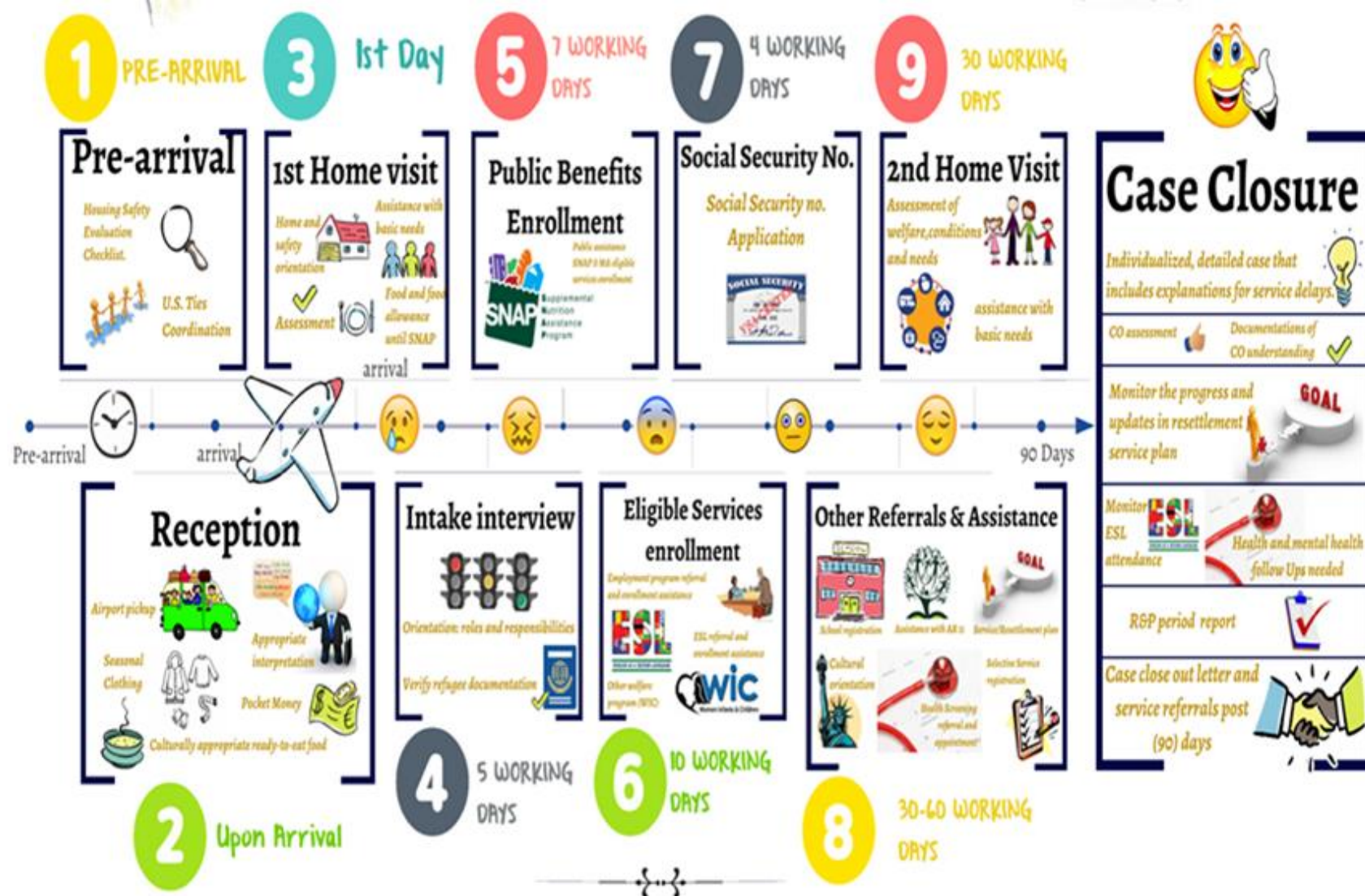
They pay taxes. ✅
Refugees are permitted to work immediately upon arrival to the US. Refugees are subject to the same tax laws as the rest of us.
<http://www.uscis.gov/humanitarian/refugees-asylum/refugees>
- 

They want the same things as you. ✅
Refugees are mothers, fathers, sons, and daughters; learners, teachers, leaders, and hard workers. They have the same priorities and passions, but have a vastly different set of experiences.

Visit <http://tracks.unhcr.org/> to see and read about the people we call refugees.

Images designed by Freepik.com

Resettlement 90 days Program



We have three refugee resettlement agencies in Jacksonville, FL.

CATHOLIC CHARITIES

LUTHERAN SOCIAL SERVICES

world relief™